

Sockets

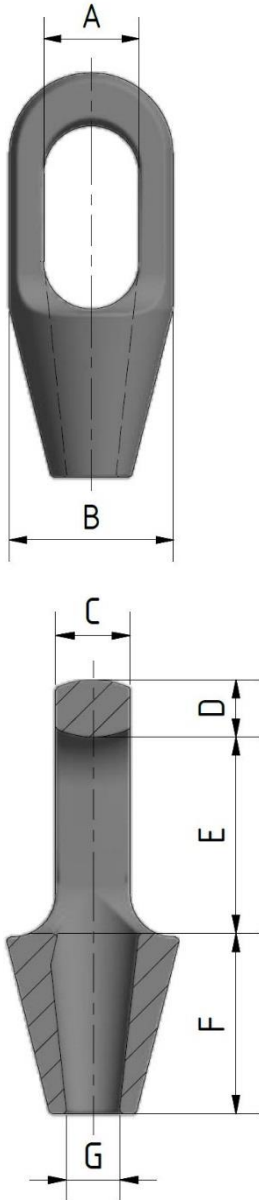


Closed Spelter Socket

Type Approved by ABS

For use on an ABS classed vessel, MODU or facility

As defined in 2009 ABS guide for Certification of Offshore Mooring Chain (updated 10 February 2014)



Rope	A	B	C	D	E	F	G	R3 MBL kN	R4 MBL kN
6-7	20	37	13	11	46	51	8	47	58
8-10	24	43	16	14	52	51	11	96	118
11-13	29	51	22	18	59	64	14	162	199
14-16	35	67	25	20	65	77	18	244	300
18-19	42	75	31	26	75	90	21	342	420
20-22	47	92	38	33	90	101	24	456	560
23-26	57	104	44	36	103	114	28	632	776
27-30	63	114	51	39	116	127	32	835	1026
31-36	70	127	57	43	130	139	38	1188	1460
37-39	79	136	63	51	155	152	41	1387	1704
40-42	82	146	70	54	171	165	44	1599	1964
43-48	89	171	76	55	198	190	51	2063	2535
49-54	96	193	82	62	224	216	57	2580	3170
55-60	108	216	92	73	247	228	63	3147	3867
61-68	140	241	102	79	270	248	73	3976	4885
69-75	159	273	124	76	286	279	79	4767	5857
76-80	171	292	133	83	298	305	86	5366	6594
81-86	184	311	146	102	311	330	92	6122	7522
87-93	197	330	159	102	330	356	99	7051	8664
94-102	216	362	178	108	356	381	108	8315	10217
108-115	235	405	190	120	425	450	125	10263	12610
122-130	260	515	205	120	475	500	138	12663	15559
140-155	300	550	225	150	550	580	160	16930	20802
158-167	325	600	300	175	600	675	175	19056	23414



Type Approval by:

Application:

Manufactured & Tested:

Material:

ABS for 49 – 54 mm, other sizes upon request

Temporary and Mobile Mooring

in Germany by Feubo

Cast Steel – Grade R3